

9TH ANNUAL CONFERENCE

3rd - 6th November, 2016

SHANGRI-LA HOTEL MAKATI-MANILA THE PHILIPPINES

REMEMBER this year's **MPL CONFERENCE**, is particularly special as we are celebrating our **10th Anniversary** and we have many special events lined-up for your enjoyment.

WHY MPL CONFERENCES ARE SO IMPORTANT FOR YOU

- To give YOU the opportunity to meet other Members face to face, and build a business rapport.
- For YOU to reconnect with old friends and to re-enforce YOUR business relationships with them.
- If YOU are a new member you will be introduced to everyone and see first-hand how MPL functions
- By inviting your Agents, YOU get to know them better and can encourage them to join our Group.
- As an attendee YOU learn first of MPL's NEW ideas and plans

If you have **NOT** yet booked - please hurry because we are almost full.

REGISTRATION FORMS ARE AVAILABLE ON OUR **WEBSITE**
OR CONTACT sophie@marcopololine.com

WE ARE LOOKING FORWARD TO
CELEBRATING MPL'S 10TH ANNIVERSARY
WITH YOU IN THE PHILIPPINES



AS OF DATE OF PUBLICATION MPL NOW IS LOCATED IN
100 COUNTRIES WITH 349 GLOBAL OFFICES

marcopololine.com

ITINERARY

WEDNESDAY MORNING, 2ND NOVEMBER 2016

MPL GOLF TOURNAMENT.

FOR FURTHER DETAILS PLEASE CONTACT OUR MPL DIRECTOR,
Luis Gimeno - luisgimeno@continentalwl.com

THURSDAY EVENING, 3RD NOVEMBER 2016 - The Shangri-La Hotel

19:00 – 20:00 Welcome Drinks and Hors d'oeuvres

20:00 – 23:30 Welcome Dinner PLUS SURPRISES

FRIDAY, 4TH NOVEMBER 2016 - The Shangri-La Hotel

ALL DAY Conference Presentations followed by 1 on 1 Meetings

FRIDAY EVENING, 4TH NOVEMBER 2016 - Barbara's Restaurant

19:30 – 23:30 Dinner and Show

Coaches will be at the hotel at 19:30 to take you to the Restaurant.

SATURDAY, 5TH NOVEMBER 2016 - The Shangri-La Hotel

ALL DAY Continuation of 1 on 1 Meetings

18:00 **MPL Football Match** (still trying to arrange this)

SATURDAY EVENING, 5TH NOVEMBER 2016 - Hard Rock Café

20:00 – 02:00 Farewell Drinks and Dinner plus **MPL Party**, with

Disco music and a live Band

HRC is across the Road from the Hotel



marcopololine.com

SUNDAY, 6TH NOVEMBER 2016 OPTIONAL EXTRA

Those who have NOT chosen the Optional Extra will depart.

09:30

Pick-up at Hotel.

Those booked for the Optional Extra will ENJOY:

A City Tour followed by Lunch.

Afternoon free for shopping, relaxing or playing tennis

SUNDAY 7TH NOVEMBER

Head off Home OR enjoy a fantastic 4 or 7 day vacation on Boracay.

FULL DETAILS ARE ENCLOSED HERewith.

BOOKING FORMS ARE AVAILABLE FROM OUR WEBSITE
OR PLEASE CONTACT SOPHIE@MARCOPOLOLINE.COM



marcopololine.com

follow-us on



9TH ANNUAL CONFERENCE
3rd - 6th November, 2016



marcopololine.com

MANILA - MAKATI

ARRIVAL

Manila Ninoy Aquino International Airport or NAIA, also known as Manila International Airport is one of the two international airports serving the Metro Manila Area and is the main international gateway to the Philippines.

It is about 7 kilometers (4 miles) south of the country's capital Manila, and southwest of Makati City's Central Business District.

Officially, NAIA is the only airport serving the Manila area. However, in practice, both NAIA and Clark International Airport, located in the Clark Freeport Zone in Pampanga serve the Manila area, with Clark catering mostly to low-cost carriers that avail themselves of the lower landing fees than those charged at NAIA. Upon arrival, take a taxi to the hotel.

TAXIS

Taxis are plentiful throughout Manila, and are a cheap and effective way of reaching your destination quickly and on time. Most taxis are metered. If a taxi is not metered, be sure to negotiate a price in advance.

CURRENCY

The Philippine currency is known as Philippine Peso (PHP). The basic unit of money is call the peso (for bills) or centavos (for coins).

CREDIT CARDS

Credit cards are accepted in major hotels, restaurants as well as in shopping malls.

ATM'S

Are available in the airport and throughout the city.



marcopololine.com



TAXES

A 12.75% surcharge, including government tax, is applicable in most hotels, restaurants, salons and spas.

BANK HOURS

9am - 6pm Monday through Friday. Those inside shopping malls are open from 9am to 6pm, Monday through Saturday.

SHOPPING HOURS

10am - 9pm or later throughout the week

OFFICE HOURS

9am - 6pm Monday through Saturday

CLIMATE

Together with the rest of the Philippines, Makati lies entirely within the tropics. Its proximity to the equator means that the temperature range is very small, rarely going lower than 20 °C (68 °F) and going higher than 38 °C (100 °F). However, humidity levels are usually very high which makes it feel much warmer. It has a distinct, albeit relatively short dry season from January through

May, and a relatively lengthy wet season from June through to December.

HOW SAFE IS MANILA

It is relatively safe particularly in recent years, but like all major cities worldwide you should always be alert and vigilant. Leave all valuables in the hotel safe (expensive watches, jewelry etc.). Ensure you have a firm grip on cameras and shoulder bags, and that your wallets are NOT easily accessible.

MEDICAL PRECAUTIONS

Everyone should visit either their personal physician or a travel health clinic 4-8 weeks before departure. Vaccinations may be necessary.

VISAS

Due to an implementation almost 3 years ago by the Philippine Government, in order to increase tourism, you may not need a visa.

HOWEVER, IT IS IMPERATIVE THAT YOU CHECK WITH YOUR LOCAL PHILIPPINE CONSULATE OR EMBASSY AND DO THIS WELL IN ADVANCE OF DEPARTURE.

In addition, ensure your passport is valid.

IF YOU FIND YOU DO NEED A VISA, PLEASE CONTACT ME AT SANDY@MARCOPOLOLINE.COM
BOTH OUR HOST, LEON LAGRAMA OF LF GLOBAL/PHILIPPINES AND
I WILL ASSIST YOU WITH LETTERS OF INVITATION.





MarcoPoloLine™
GROUP



WIND DOWN AFTER 3 DAYS OF INTENSE WORK TAKE A VACATION!

Our **MPL Conferences** are most beneficial for attendees, yet at the same time 3 days of working and socializing, can be extremely exhausting, particularly the 1 on 1 meetings. They have been described as sales appointments / meetings in override!!

Afterwards, in most cases you have a long flight, and returning to your office looking fresh and ready. **HOWEVER**, that can be easier said than done.

WHAT YOU NEED IS A VACATION first, before you get back into your routine - 4 days or a week, should suffice.

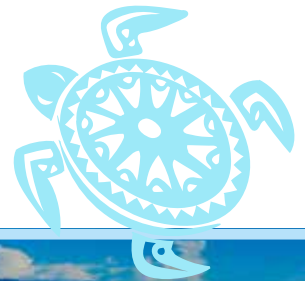
MPL, IN THINKING ABOUT YOUR WELFARE has come up with the perfect solution and venue, where you can relax, unwind and party OR NOT. Either way, at the end of 4 days or a week, whichever you choose, you will feel refreshed and REVITALIZED and raring to go, upon your return home.

BORACAY is among one of the most captivating places in the tropics.

Its long, white-sanded beaches are recognized as among the best in the world. You can travel the beaches on horseback, play volleyball, or simply stretch out next to the pool or sea.

Located roughly 300 km from Manila, the island is approximately 7 kilometers long, dog-boned shaped with the narrowest spot being less than one kilometer wide.

LEISURE ACTIVITIES available on or near Boracay are horseback riding, scuba diving, snorkeling, windsurfing, kiteboarding and cliff diving.





TWO SEASON'S BORACAY RESORT

| | |
|-------------|------------------|
| SINGLE | \$765 |
| TWIN/DOUBLE | \$490 PER PERSON |
| EXTRA NIGHT | \$165 PER ROOM |



With EACH BOOKING, THERE IS A \$50 HANDLING AND AGENCY FEE.

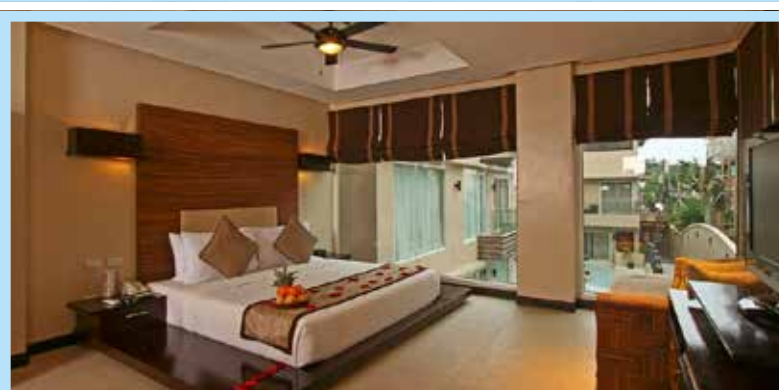
Airline: via Philippine Airlines
Flights: MNL: 0825h MPH: 0925h
MPPH: 1405h MNL: 1510h

THE PACKAGE INCLUDES:

- Round trip Airfare via Philippine Airlines
- Round trip Airport Transfer (Boat and Land Transfer)
- 10kg check in baggage, 7 kg Hand carry
- 4 days and 3 nights - 7th-10th November OR extra nights on request.
- Daily Buffet Breakfast
- Souvenir of your visit

THE MAXIMUM QUOTA IS **ONLY** 20 - 30 INDIVIDUALS
SO YOU MUST BOOK NOW

FOR FURTHER INFORMATION, PLEASE CONTACT sophie@marcopoline.com



THE PHILIPPINES

In the May edition of the Newsletter, I covered Makati, its history through to the present, much of which also applies to The Philippines in general.

The Philippines, officially called the Republic of the Philippines was named in honor of King Philip II of Spain whose reign was from 1544 to 1558.

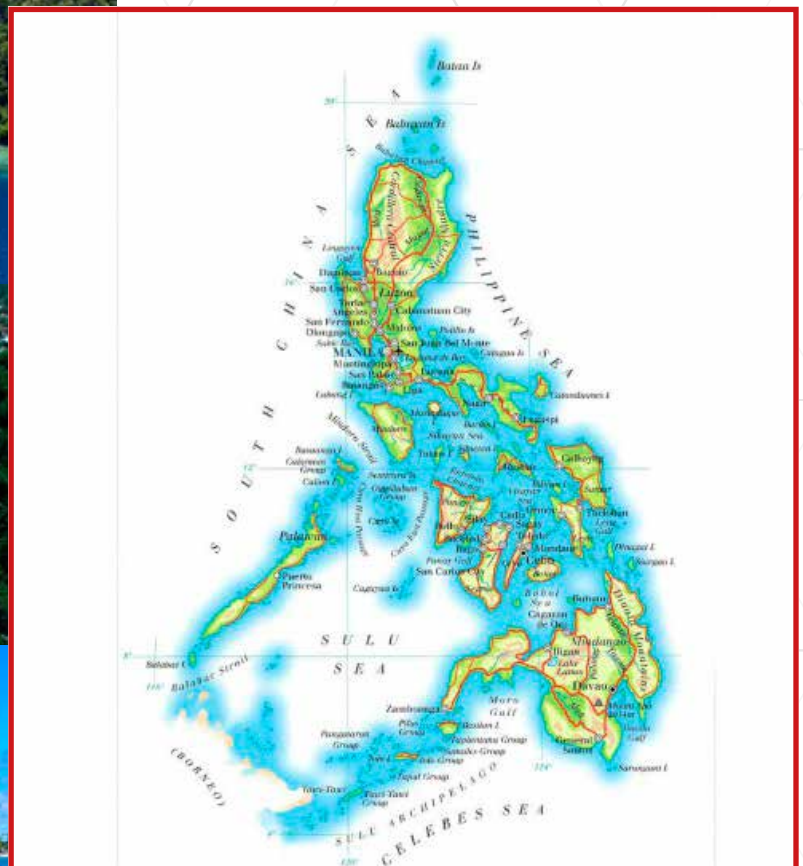
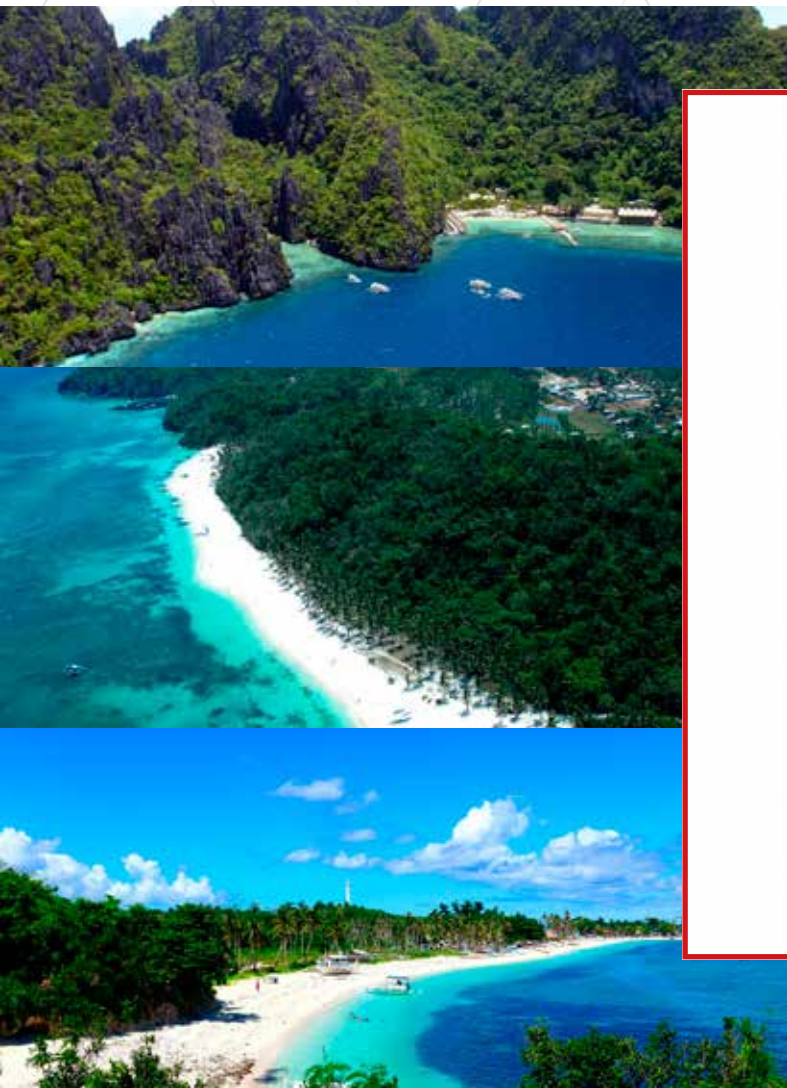
The country is in Southeast Asia and situated in the western Pacific Ocean in the Ring of Fire, close to the equator, which means that it is prone to earthquakes and typhoons, but also endowed with an abundance

of natural resources and some of the world's greatest bio-diversities. It consists of roughly 7640 islands.

The Philippines has an area of approximately 300,000 square kilometers (115,831 sq. miles), with a population of more than 100 million with a faster growth than any other East Asian country. It is the seventh most populated country in Asia and the 12th in the world. There are an additional 12 million Filipinos living overseas. Multiple ethnicities and cultures, due to its history, can be found throughout the islands. The Philippine presidential and vice

presidential elections were held on Monday, May 9, 2016. This was the 16th presidential election in the Philippines since 1935 and the sixth since 1986.

Rodrigo Duterte led the preliminary count with 38.5% of the vote, a lead thought to be unassailable. Congress had met in late May to canvass the results, issued an official result with Rodrigo Duterte and Leni Robredo emerging as the winners of the presidential and vice presidential races, respectively. They were proclaimed on May 30, in the House of Representatives.



PHILIPPINE CUISINE

The food and the style of cooking have evolved over many centuries from their Austronesian origins to mixed cuisines of Malayan, Indian, Spain, Chinese and American.

Dishes range from the very simple, such as fried salted fish and rice, to elaborate paellas and cocidos created for fiestas of Spanish origin. Many plates include lechon (whole roasted pig), longganisa (Philippine sausage), tapa (cured beef), torta (omelette), adobe (chicken and/or pork braised in garlic, vinegar, oil and soya sauce).

Understandably with the country being made up of islands, seafood is very much consumed too, Peanut sauce, pineapple, bananas, together with tomatoes, squash, eggplant, beans, okra make up many of the recipes, plus noodles and rice.

Sweet, sour, salty and spicy are the bases of cooking flavor, with vinegar being a common ingredient.

Spring rolls are particularly popular, especially at celebrations.





We're happy to introduce Care as our new international insurance partner.

Established in 2001 by Sergio De Regibus following a 40-year long career in insurance, Care is a leading specialist international insurance broker based in Milan, Italy and in Lugano, Switzerland. As a well-established professional and rigorous intermediary between firms and the most important insurance companies, Care has a strong expertise in Marine risks (including project cargo): in this field the company can offer a second-to-none service to international freight forwarders, carriers and worldwide logistics operators, thanks to a sound industry knowledge. In addition to this, Care can provide to its customers wide-ranging property and liability covers, pollution and environmental liability policies, travel, life&health and legal protection.

A strong expertise in technologies (including renewable energies and, in the coming months, cyber policies) completes their varied skills. Thanks to its own network of correspondents and to its status of Lloyd's correspondent Care has a truly global presence, recently further strengthened after joining unisonBrokers, a global network of more than 350 intermediaries. Its years-long, cherished relationships with the most important international insurance companies are an advantage for any Marco Polo Line member. The valued additional first-class service usually provided by Care to its clients, which includes effective risk analysis, professional claims management and its specialists' continued availability, will be the same offered to all Marco Polo Line members: a guarantee of quality that will ensure that Care will take...care of them.



INTRODUCING CARE



WHO?

CARE is an **international insurance broker**, a professional and rigorous intermediary between firms and the most important insurance companies. In the **professionalism** of our specialists and consultants our clients can find the necessary peace of mind enabling them to concentrate on the development of their business, without having to worry about the consequences resulting from the risks of their activities.

- We know and understand our customers' **specific needs**.
- We can find for them the most suitable cover.
- We **guide** them for the whole duration of the insurance contract.
- We provide **support** with our specialists in case of damages up until compensation.

Our **Marine** clients:

- International freight forwarders
- Worldwide logistics operators
- Manufacturers



WHEN?

CARE's history is deeply linked to the 40-years-long insurance career of Sergio De Regibus, its founder and Managing Director.

CARE's challenge started in 2001: the new company strengthened our manager's experience and wide portfolio of customers, but at the same time grew and progressed with new young talents and a truly **international presence**.

As a **Lloyd's correspondent**, we established new contacts in Marine insurances and at the same time invested in key-areas, such as Project Cargo/Oil&Gas, technologies and renewable energies.

At CARE we are strong because of our past and therefore confident about the future.



WHERE?

Our headquarters are placed in the business district of Milanofiori (close to Milan, **at the heart of Italy's economically most dynamic region**). Furthermore, in the **Swiss** city of Lugano, CARE Suisse follows directly and independently the market of the Confederation.

Our global network is based on three main axes:



CARE'S OWN NETWORK OF TRUSTED CORRESPONDENTS.

LLOYD'S

AS LLOYD'S CORRESPONDENTS, WE CAN PLACE RISKS WORLDWIDE.



PROUD MEMBER OF UNISON BROKERS, A GLOBAL NETWORK OF 350 INSURANCE INTERMEDIARIES.

WHAT?

A summary of our most valued insurance products.

- **Marine:** Cargo Liability & Forwarders Cargo for worldwide freight forwarders, their subcontractors and manufacturers.
- **Project Cargo/Oil&Gas:** special covers for the great industrial projects and infrastructures' logistics.
- **Commercial General Liability**
- **Charterer's (vessel) Liability and Aircraft Liability**
- **Pollution and Environmental Liability**
- **Travel, Life&Health, legal protection** for companies and individuals.
- **Property:** wide-ranging warranties against fire, thefts, indirect damages and, of course, cargo.
- **Swiss based insurance products** for the Confederation.

WHY?

- Sound expertise and industry knowledge, long-lasting experience.
 - Ongoing and reliable assistance with a global presence.
 - Our specialists' continued availability.
- Effective risk analysis in a complex and vast insurance world.
- In-depth contractual review and comprehensive examinations.
 - Professional claims management.

We are, in short, a **leading specialist insurance broker**, with strong products and a sound industry knowledge, providing our clients with the best available products and service.

OUR MARINE PARTNERS

CNA / **HARDY**



TRAVELERS



CHUBB



OUR WEB CHANNELS:



www.broker-care.com



<https://www.facebook.com/careinternationalinsurancebroker/>



<https://www.linkedin.com/company/care-international-insurance-broker>

THANK YOU.

CONTACT US AT:

@ insurance@marcopololine.com





Thinking ahead,
planning ahead
helps you succeed

EVENTS 2017



WestPack - Anaheim - California

7th-9th Feb. 2017

Deadline to book on the 9th of January 2017

Website: www.westpack.packagingdigest.com



Transport Logistic

9th-12th May 2017

Deadline to book on the 3rd of April 2017

Website: www.transportlogistic.de/index-2.html



The BIG 5 - Dubai

26th-29th November 2017

Deadline to book on the 23rd of October 2017

Website: www.thebig5.ae

(Their website shows this year's date, but will be updated after the event in November 2016)



MPL Annual Conference

Details to be announced in Manila at the 2016 9th Conference



It's better to look ahead and prepare,
than to look back and regret.

Jackie Joyner-Kersee

MPL OFFERS TO MAKE YOUR LIFE SIMPLER WITH OUR SPECIAL DEAL ON A FULL ANNUAL EVENTS PACKAGE

CHOOSE THE RIGHT SOLUTION FOR YOU TO PROMOTE YOUR COMPANY, WHILST GAINING TIME AND MONEY

SPECIAL REDUCED PACKAGE RATE:



1 LOGISTICS EXHIBITION



2 PRODUCT EXHIBITIONS



ANNUAL MEMBERSHIP FEE INCLUDED



ATTENDANCE AT THE CONFERENCE WITH VIP STATUS

FOR FURTHER INFORMATION PLEASE CONTACT
sophie@marcopololine.com



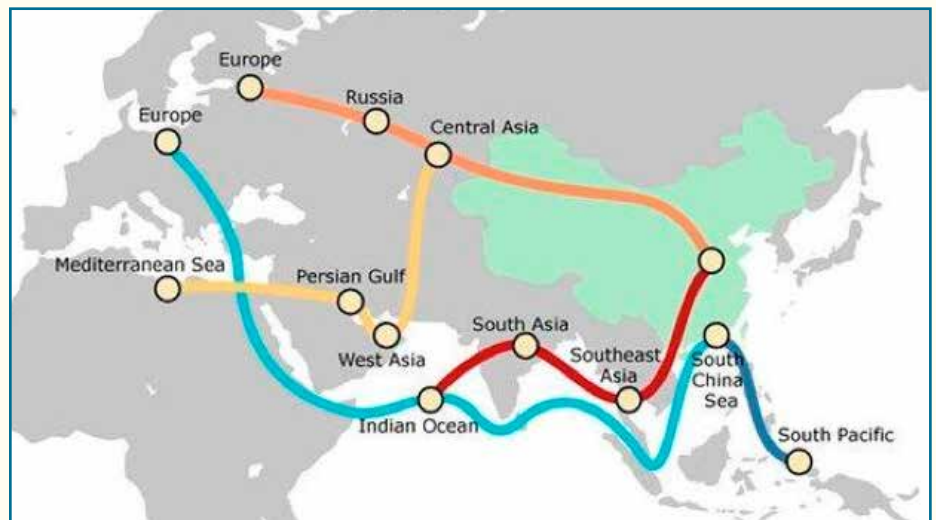
One Belt One Road Initiative

Facilitating Next-level Development
for MarcoPoloLine Members



1. Basic Introduction

Nowadays, the word “One Belt One Road” has become a commonly mentioned phrase in Global Logistics Industry. Historically speaking, the “One Belt One Road” Initiative was first announced by President Xi Jinping of China in 2013, during his visit to Kazakhstan and Indonesia. Officially, the initiative stands for **“the Silk Road Economic Belt and 21st Century Maritime Silk Road”**. Subsequently has become a vital and influential foreign policy for boosting economic cooperation amongst countries along the “Belt” and “Road” Regions.



*The Outline of One Belt One Road Initiative
(HKTDC, 2016. Available at: beltandroad.hktdc.com/en/index.aspx)*

2. Background Analysis and Major Objectives

There's no denying the fact that the fluctuating Global Economy had put much uncertainty for the logistics industry around the world. Briefly speaking, the following factors have greatly influenced the developing format of world economy & political landscape, thus facilitating the original intention for establishing a common strategy in guiding all involved parties to drive more potential business.

- 1) The Political Uncertainties have influenced the development among big economies/entities;
- 2) Complex and profound changes are taking place around the world;
- 3) The underlying impact of the international financial crisis keeps emerging;
- 4) The international trade and investment landscape for multilateral trade & investment are undergoing major adjustments;
- 5) The fluctuating world economy is recovering slowly & global development is uneven;
- 6) Countries still face big challenges to their next-level development under WTO Trade Facilitation Agreement.

Under such circumstances, the significant development strategy was launched by the Chinese government with the intention of promoting economic cooperation among countries along the proposed Belt and Road routes. The Initiative has been designed to enhance the orderly free-flow of economic factors and the efficient allocation of resources.

3. The One Belt One Road Landscape

The Belt and Road Initiative consists of two parts, aiming to connect Asia, Europe and Africa along five routes as specified below.

The One is “**The Silk Road Economic Belt**”, which focuses on: (1) linking China to Europe through Central Asia and Russia; (2) connecting China with the Middle East through Central Asia; and (3) bringing together China

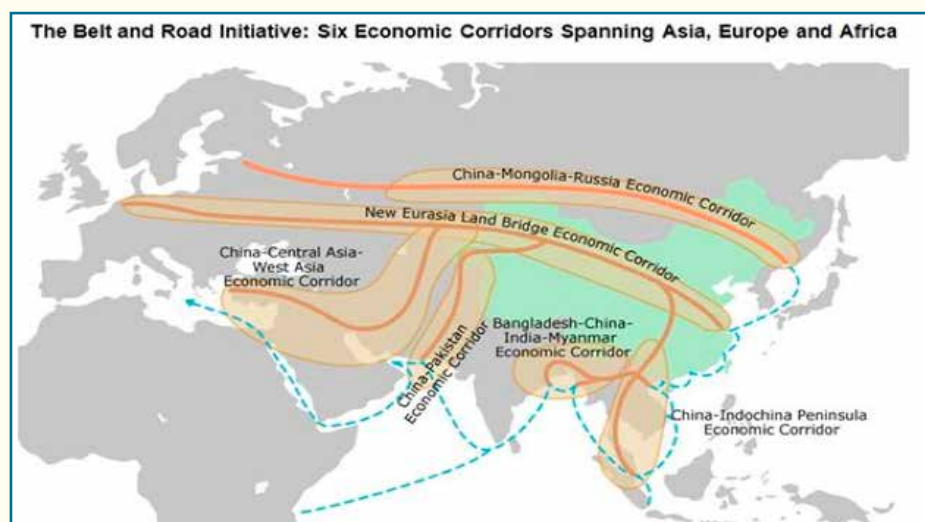
and Southeast Asia, South Asia and the Indian Ocean.

The other component part is “**The 21st Century Maritime Silk Road**”, which focuses on using Chinese coastal ports to: (4) link China with Europe through the South China Sea and Indian Ocean; and (5) connect China with the South Pacific Ocean through the South China Sea.

Focusing on the above five routes, the Belt and Road will take advantage

of international transport routes as well as core cities and key ports to further strengthen collaboration and build six international economic co-operation corridors.

These have been identified as the **New Eurasia Land Bridge**, China-Mongolia-Russia, China-Central Asia-West Asia, China-Indochina Peninsula, China-Pakistan, and Bangladesh-China-India-Myanmar.



The Belt and Road Initiative Landscape (HKTDC Research, 2016. Available at: esearch.hktdc.com)

4. Major Co-operation Mechanism and Benefits Derived

The Belt and Road Initiative upholds the principles of jointly developing the program through consultation with all interested parties. Existing bilateral and multilateral co-operation mechanisms will be utilized to promote the integration of the development strategies of the countries along the route.

The Five Major Cooperation Mechanisms and Benefits derived are: **Policy Co-ordination, Facilities Connectivity, Unimpeded Trade, Financial Integration, and People-to-people Bonds**. As predicted by President Xi Jinping of China, “This

initiative will directly affect 4.4 billion people with a collective GDP of US\$2 trillion once completed”. Such benefits shall be the main driving force for implementing the strategy in the long term.

1. Policy Coordination & Political Cooperation

In terms of the specifics cooperation areas, **Policy Co-ordination** means that countries along the Belt and Road will jointly formulate development plans and measures for advancing cross-national or regional co-operation and efficiently resolve problems arising from co-operation and jointly provide policy support to practical cooperation.

2. Facilities Connectivity & Logistics Integration

The Facilities Connectivity refers to prioritize areas of construction as part of the Belt and Road strategy with the integration of logistics. Efforts will be made to give priority to removing barriers in the missing sections and bottleneck areas of core international transportation passages, advancing the construction of port infrastructure facilities, and clearing land-water intermodal transport passages. The connectivity of infrastructure facilities, including railways, highways, air routes, telecommunications, oil and natural gas pipelines and ports, will also be promoted. This will form part of a

move to establish an infrastructure network connecting various Asian sub-regions with other parts of Asia, Europe and Africa.

3. Unimpeded Trade & Economic Prosperity

In order to facilitate the Unimpeded Trade, steps will be taken to resolve investment and trade facilitation issues to reduce investment & trade barriers and promote regional economic integration. Efforts will also be made to broaden the scope of propel trade through investment, and strengthen co-operation along supply chain with all related countries.

4. Financial Integration & Risk Mitigation

With regard to financial integration, action will be taken to enhance co-ordination in monetary policy to expand the scope of local currency settlement and currency exchange in trade and investment between countries along the route. The Initiative shall deepen multilateral and bilateral financial co-operation, set up regional development financial institutions, strengthen co-operation in monitoring financial risks, and enhance the ability of managing financial risks through regional arrangements.

5. People-to-people Bonds & Cultural Blending

In terms of people-to-people bonds, efforts will be made to promote exchanges and dialogues between different cultures, strengthen friendly interactions between the people of various countries and heighten mutual understanding and traditional friendships. This will all form the basis for the advancement of regional co-operation.

Overall, in order to implement the Belt and Road Initiative, major steps will be taken to advance the signing of co-operation memorandums of understanding or co-operation plans.

The establishment of a number of bilateral co-operation demonstration projects will help to set up a sound bilateral joint work mechanism. The whole project is to devise an implementation plan and action roadmap for advancing the Belt and Road strategy.

5. The Silk Road Fund and Asian Infrastructure Investment Bank (AIIB)

In order to initiate the construction of "Silk and Road", central government in China has established the **US\$40 billion** Silk Road Fund in order to boost cooperation among the involved parties.

With the utmost support of shareholders as China's State Administration of Foreign Exchange, the China Investment Corp, the Export-Import Bank of China and the China Development Bank etc., the Fund will comply with market rules and the international financial principles under WTO to boost the participation from domestic and overseas investors, thus also giving rise to **Asian Infrastructure Investment Bank (AIIB)**.

Briefly speaking, the AIIB Articles of Agreement entered into force on 25 December 2015. On 16 January 2016, the Board of Governors held its inaugural meeting, declaring the Bank open for business and electing **Mr. Jin Liqun** as President for an initial five-year term.

As of December 2015, all of the 57 Prospective Founding Members of AIIB had signed the Articles of Agreement. The initial signatories were Australia, Austria, Azerbaijan, Bangladesh, Brazil, Brunei Darussalam, Cambodia, China, Denmark, Egypt, Finland, France, Georgia, Germany, etc., including countries and business entities across the world.

The AIIB, a new multilateral development bank (MDB), has been set up with a view to complementing and cooperating with the existing MDBs in order to address infrastructure needs in Asia.

6. The Belt and Road Summit – Navigating a World of New Opportunities through Hong Kong

China's Belt and Road Initiative is designed to enhance the orderly free-flow of economic factors and the efficient allocation of resources by expanding business cooperation between East and West, from Asia to Europe via Southeast Asia, South Asia, Central Asia, West Asia and the Middle East.

One Belt One Road Summit was held in Hong Kong on 18 May 2016, with participants of international thought-leaders, senior ministers from countries along the Belt and Road, and world-renowned business leaders. Meanwhile, key figures of international institutions, corporate leaders, project owners, global investors and service professionals all gather and exchanged their profound views for navigating the cooperation strategies.

During the summit, **Zhang Dejiang**, chairman of the Standing Committee of the National People's Congress, stated that "The central government holds the view that Hong Kong possesses a multitude of unique strengths in the development of One Belt, One Road, and is capable of performing such functions that are of high importance".



The Belt and Road Summit

(Held in Hong Kong on 18 May, 2016; Details available at: www.beltandroadsummit.hk/en/index.html)

There's no denying the fact that Hong Kong was well situated as a natural partner and had easy economic access to the mainland, especially those areas that were on the forefront of innovation and market reforms. As put by him, Hong Kong can join forces with the pilot free-trade zone in Guangdong and the Qianhai Shenzhen-Hong Kong cooperation zone and Fujian province, a core area for the 21st Century Maritime Silk Road.

7. Future Prospects and Opportunities Brought to MarcoPoloLine Members

With the profound development of **The Silk and Road Initiative** and thriving enlargement of participants, all involved parties in MarcoPoloLine Group share the benefits for globalization & economic prosperity. The facilitation of the **Belt & Road Initiative** and **AIIB** will mainly concentrate on the development of

infrastructure and other productive sectors in Asia, including energy and power, transportation and telecommunications, rural infrastructure and agriculture development, water supply and sanitation, environmental protection, urban development etc. Under such circumstances, broad new opportunities shall be brought to our **MarcoPoloLine Members** to enhance our cooperation in global logistics for connecting the "One Belt One Road" Countries to rest of the world. Consequently, all members in **MarcoPoloLine Group** can benefit from synergy under the "Belt and Road Initiative" via Hong Kong. With joint efforts to facilitate regional cooperation, all members can complement each other's advantages in a tie-up to seek opportunities along the route.

Briefly speaking, **China Global Lines (CGL) Group**, which is headquartered

in Hong Kong and well set up in China since 1999, with 7 Offices and around 150 colleagues, covering all main ports as Hong Kong, Shanghai, Guangzhou, Shenzhen, Ningbo, Xiamen and Qingdao. We are **Class A License Holder & NVOCC License Holder** and in Supreme Position to take care of your interests around the world with Sea Freight, Air Freight & other logistics services to BOOST the global business of your renowned companies under the flourishing "One Belt One Road Initiative" in the new era!

Hope we join hands to facilitate our cooperation and grasp the brand new opportunities brought by the "One Belt and Road Initiatives". The new global logistics chapters have been unveiled for all of members involved in **MarcoPoloLine Group**, and just don't hesitates to enhance our cooperation and create the marvelous future with common benefits!

H & Friends GTL - Malaysia

Suite 06-06 Level 6, Minara Trend, Intan Millennium Square,
No. 68 Jalan Batai Laut 4, 41300 Klang Selangor Darul Ehsan MALAYSIA

Website: www.hnfriends.com

Tel: +603 3005 8588

Fax: +603 3005 8590

Attn: Jason

Email: jason@hnfriends.com

Attn: (sea & air freight)

Email: kulair@hnfriends.com / kulair@hnfriends.com



H&FRIENDS
GLOBAL TRANSPORT AND LOGISTICS

Air Export Ex PEN to ICN, S.Korea 10 Crates (11 Tons) of Machinery – 1 Freighter



Air Export ex KUL to ICN, S.Korea 76 Pallets (28 Tons) of Food Stuffs – 2 Freighter, 1 Passenger FLT.





Changed company logo, PEN staffs – Relocation of Penang office



With Kualarumper Staffs



H & Friends' W.House at KUL (Klang port Area) in connection with House relocation business. We also provide 3 PL.



OUR MEMBER NETLOG IN ISTANBUL HAS MOVED

Netlog Global Forwarding (Formerly KTT) - Istanbul Office

DLP Business Center, Haciahmet Road, Irmak Street, No.1 Floor:6
Beyoglu, Istanbul 34440, Turkey

Website: www.netloglogistics.com

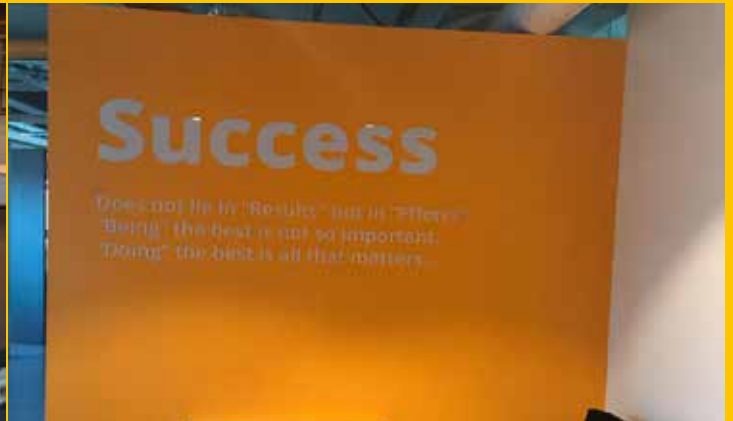
Tel: +90 (212) 622 50 30

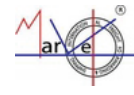
Fax: +90 (212) 622 50 31

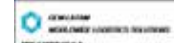
Attn: Mr. Cpt. Derya Gokcen | derya.gokcen@netloglogistics.com

Attn: Ms. Deniz Camlibel | deniz.camlibel@netloglogistics.com

MPL Email: ist_netlog@marcopololine.com







MarcoPoloLine™
GROUP



The **MPL Newsletter** should be a vital part of **The MarcoPoloLine Group** and ideally issued Bi-Monthly to ensure it is.

This is YOUR vehicle of communications within the GROUP.

HERE YOU can express YOUR views, provide information on YOUR company and country or new trade legislation;

HERE YOU can contribute antidotes, or share experiences of interest, either serious or amusing.

HERE YOU can start ongoing correspondence with other members in the form of letters

MAKING THIS PUBLICATION BI-MONTHLY DEPENDS ON **YOU THE MEMBERS**

SUBMITTING ARTICLES OR LETTERS. PHOTOGRAPHS WOULD BE GREATLY WELCOMED TOO!!

Next Newsletter

THE NEXT ISSUE WILL BE OUT IN SEPTEMBER 2016.
KINDLY START SENDING YOUR INPUT NOW!!

